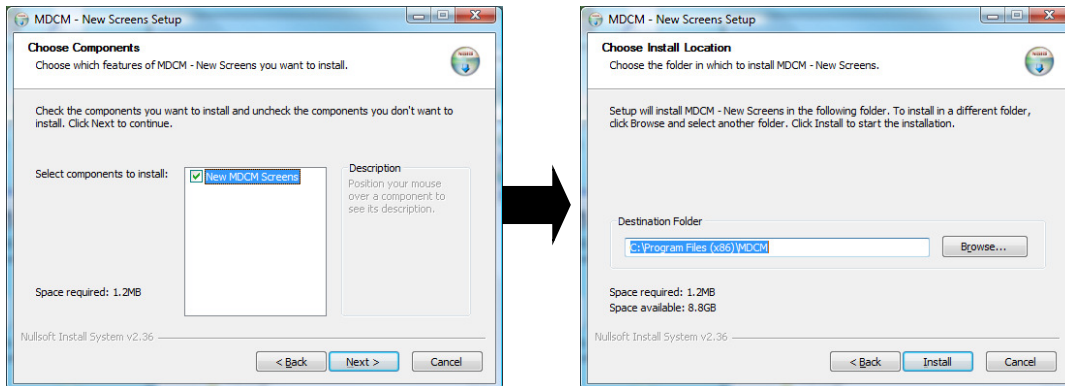


Adding new sceens:

MDCM loads all of the active screens when it starts up from the MDCParams database, which normally will reside in the same location as the MDCM.EXE. New screens will be imported into the database as follows:

- 1) Run NewMDCMScreens.exe - select the same location that has MDCParams.MDB



This will save a file called NewMDCMScreens.mdb.

- 2) Start MDCTools and the ScreenShaper tool. ScreenShaper will look in the directory for NewMDCMScreens.MDB, which has any new screens. All screens in this table will be imported into MDCParams.MDB to be used by the MAX Data Collection Monitor. Navigation for any existing screens will be kept. The NewMDCMPParams.MDB will be deleted once it has been imported.
- 3) Add and necessary navigation links and security rights to access the new screens.
- 4) Start or refresh MDCM.

